



30W, IEEE802.3at Single Port PoE Active Injectors



Features

- IEEE802.3at Complaint
- DOE VI Efficiency
- EU CoC Version 5 Tier 2 Efficiency
- Compact Size
- Limited Power Source
- Three Wire Input Models
- Full Over-Voltage and Over-Current Protection
- Non-Vented Case
- 1 Year Warranty

Applications

- IP Telephones
- Wireless Access Points
- Bluetooth® Access Points
- Security Cameras
- IP Print Servers
- WiMAX® Access Points

Safety Approvals

- cUL/UL (62368-1)
- CB (IEC62368-1)
- CE
- UL,cUL, CB 60950-X

Mechanical Characteristics

- Length: 140.1mm (5.52in.)
- Width: 45.5mm (1.79in.)
- Height: 30.0mm (1.18in.)
- Weight: 200g (7.04oz)

Output Specifications

| Model | Input Connector | Data Rate | DC Output Voltage | Load | | Regulation ¹ | |
|---------------------------|-----------------|-----------------------------|-------------------|------|-------|-------------------------|------|
| | | | | Min. | Max. | Line | Load |
| POEA30U-1AT | C14 | 10/100/1000 | 56V | 10mA | 536mA | ±5% | |
| POEA30U-1ATE ² | C14 | 10/100/1000 | 56V | 10mA | 536mA | ±5% | |
| POEA30U-1AT-2 | C14 | 10/100/1000/2500 | 56V | 10mA | 536mA | ±5% | |
| POEA30U-1AT-5 | C14 | 10/100/1000/2500/5000 | 56V | 10mA | 536mA | ±5% | |
| POEA30U-1AT-X | C14 | 10/100/1000/2500/5000/10000 | 56V | 10mA | 536mA | ±5% | |

Notes:

1. Voltage measured within 2" of the output RJ45 connector on data pairs 3,6(+) and 1,2(-)
2. Shielded RJ45 jacks

Phihong is not responsible for any error, and reserves the right to make changes without notice. Please visit our website at www.phihong.com for the most up-to-date specifications and contact information.

INPUT:**AC Input Voltage Range**

90 to 264VAC

AC Input Current

0.8A (RMS) max

AC Input Frequency

47Hz to 63Hz

Leakage Current

3.5mA max @254V, 50Hz

Max In-rush Current60A max at 240VAC and max load
(Cold Start at ambient 25°C)**OUTPUT:****Output Power**

30W

Hold up Time

10mSec min at max load at 120VAC, 60Hz

Efficiency

Minimum 85% @max load

ENVIRONMENTAL**Temperature**

Operating -10°C to +40°C

Non-operating -20°C to +70°C

Relative Humidity 5 to 90%

EMI

EN55032 Class B, FCC part 15 Class B

EMC

ESD: IEC61000-4-2 , Level 3

RS: IEC61000-4-3, Level 3

EFT/Burst: IEC61000-4-4, Level 2

Surge: IEC61000-4-5, Level 3

CS: IEC61000-4-6 , Level 3

Voltage Dips: IEC61000-4-11, Class 3

Harmonic: IEC61000-3-2, Class A

Isolation (HI-POT)

4242VDC for 1 minute, 10mA

Insulation Resistance

Primary to secondary:>10M Ohm 500VDC

FEATURES:**Over Voltage**

Conforms to UL60950-1. Voltage between 2 SELV conductors shall not exceed 42.4Vpk or 60VDC for longer than 0.2seconds. Moreover a limit of 71Vpk or 120VDC shall not be exceeded. – Latching

Over Current

750mA max

Short Circuit Protection

Non-Latching Auto recovery. Output can be shorted permanently without damage.

LED Indicators

Orange Flash – Fault Detected

Orange Solid – Over/Short Current Detected

Green Solid – Power Good

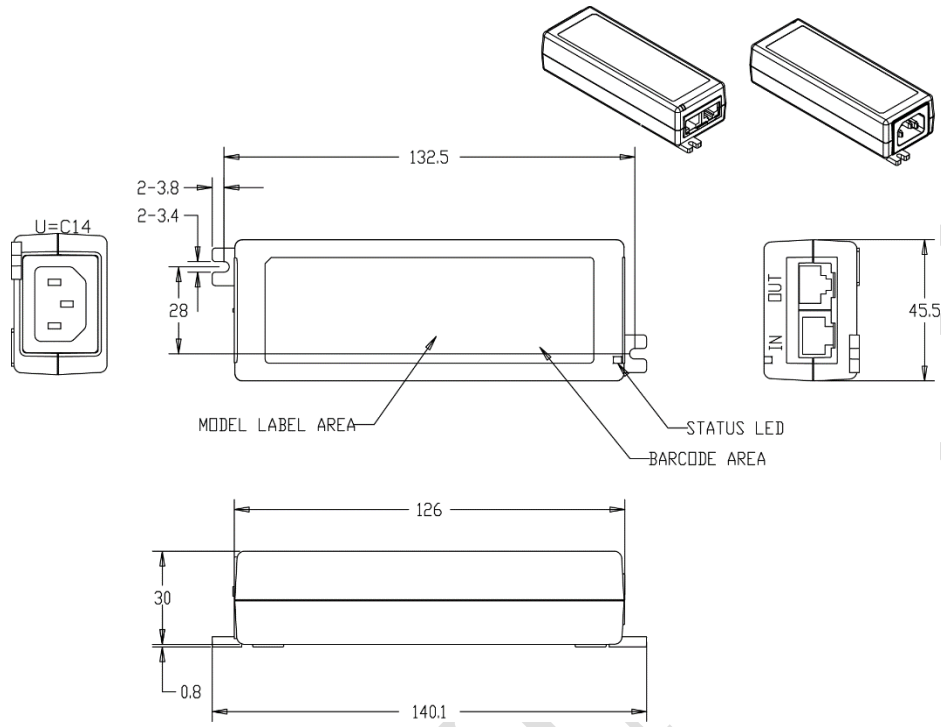
AC Input Connector

IEC320 C14 - U Models – three wire

Output Connection

56vdc RJ45 Pins 3&6

56vrtn RJ45 Pins 1&2



PRELIMINARY